

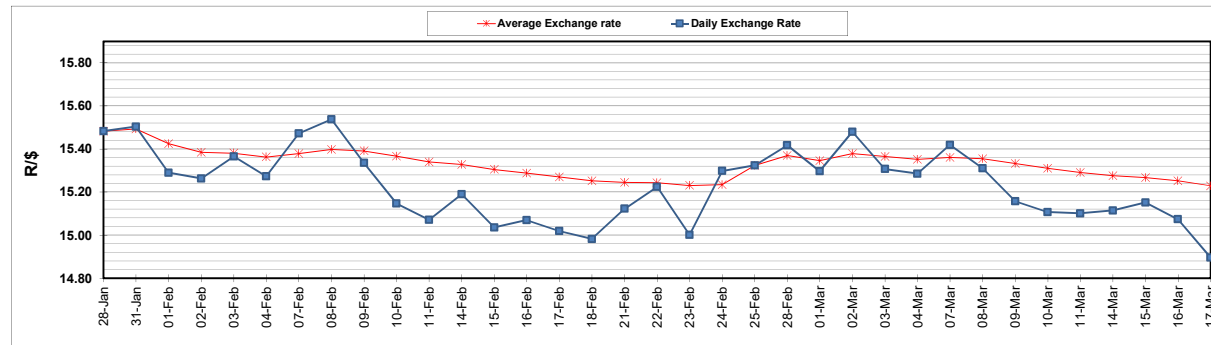
	PETROL 95 ULP	PETROL 93 ULP & LRP	DIESEL 0.05%	DIESEL 0.005%	ILL. PAR.
GAUTENG PUMP PRICE (SA c/l) AS FROM 02/03/2022	2,160.000	2,135.000	-	-	-
WHOLESALE PRICE (SA c/l) AS FROM 02/03/2022	-	-	1,948.880	1,955.280	1,318.688
SINGLE NATIONAL MAXIMUM RETAIL PRICE	-	-	-	-	1,690.000
BASIC FUEL PRICE - 17/03/2022 (SA c/l)	1,205.346	1,180.713	1,311.717	1,332.175	1,284.597
PRESS RELEASE CONTRIBUTION TO BFP 02/03/2022 - 17/03/2022 (SA c/l)	1,100.270	1,085.270	1,107.630	1,114.030	1,097.128
UNIT OVER/(UNDER) RECOVERY - 17/03/2022 (SA c/l)	(105.076)	(95.443)	(204.087)	(218.145)	(187.469)
AVERAGE BASIC FUEL PRICE 25/02/2022 - 17/03/2022	1,272.960	1,250.117	1,358.367	1,378.053	1,308.866
AVERAGE UNIT OVER/(UNDER) RECOVERY 25/02/2022 - 17/03/2022	(198.818)	(190.975)	(276.537)	(290.623)	(235.938)

ANALYSIS MOVEMENT OF AVERAGE OVER/(UNDER) RECOVERY

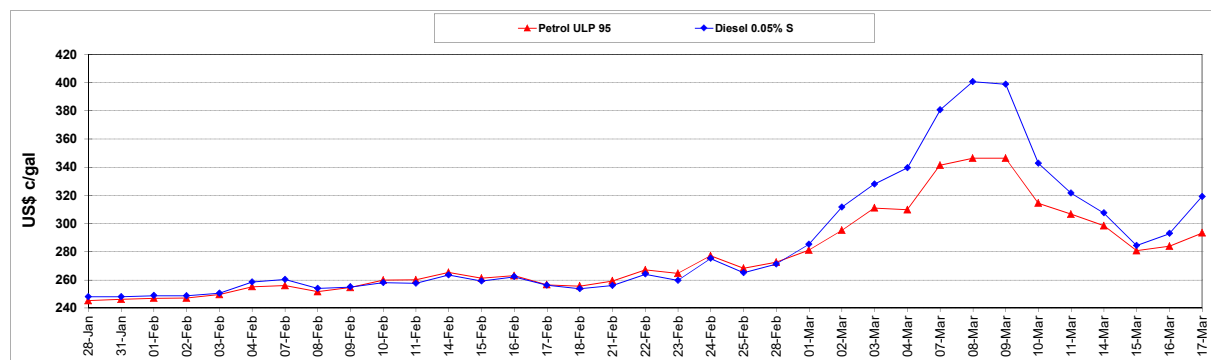
	PETROL 95	PETROL 93	DIESEL 0.05%	DIESEL 0.005%	ILL. PAR.
- MOVEMENT IN INTERNATIONAL PRODUCT PRICES	(199.228)	(191.377)	(276.974)	(291.066)	(236.359)
- MOVEMENT IN EXCHANGE RATE	0.410	0.402	0.437	0.443	0.421
AVERAGE UNIT OVER/(UNDER) RECOVERY 25/02/2022 - 17/03/2022	(198.818)	(190.975)	(276.537)	(290.623)	(235.938)

R/\$ EXCHANGE RATE - (R/\$14.8963 - 17/03/2022)

EXCHANGE RATE USED IN BASIC FUEL PRICE



INTERNATIONAL PRODUCT PRICES OF BASKET USED IN BASIC FUEL PRICE



BASIC FUEL PRICE IN SA CENTS PER LITRE

